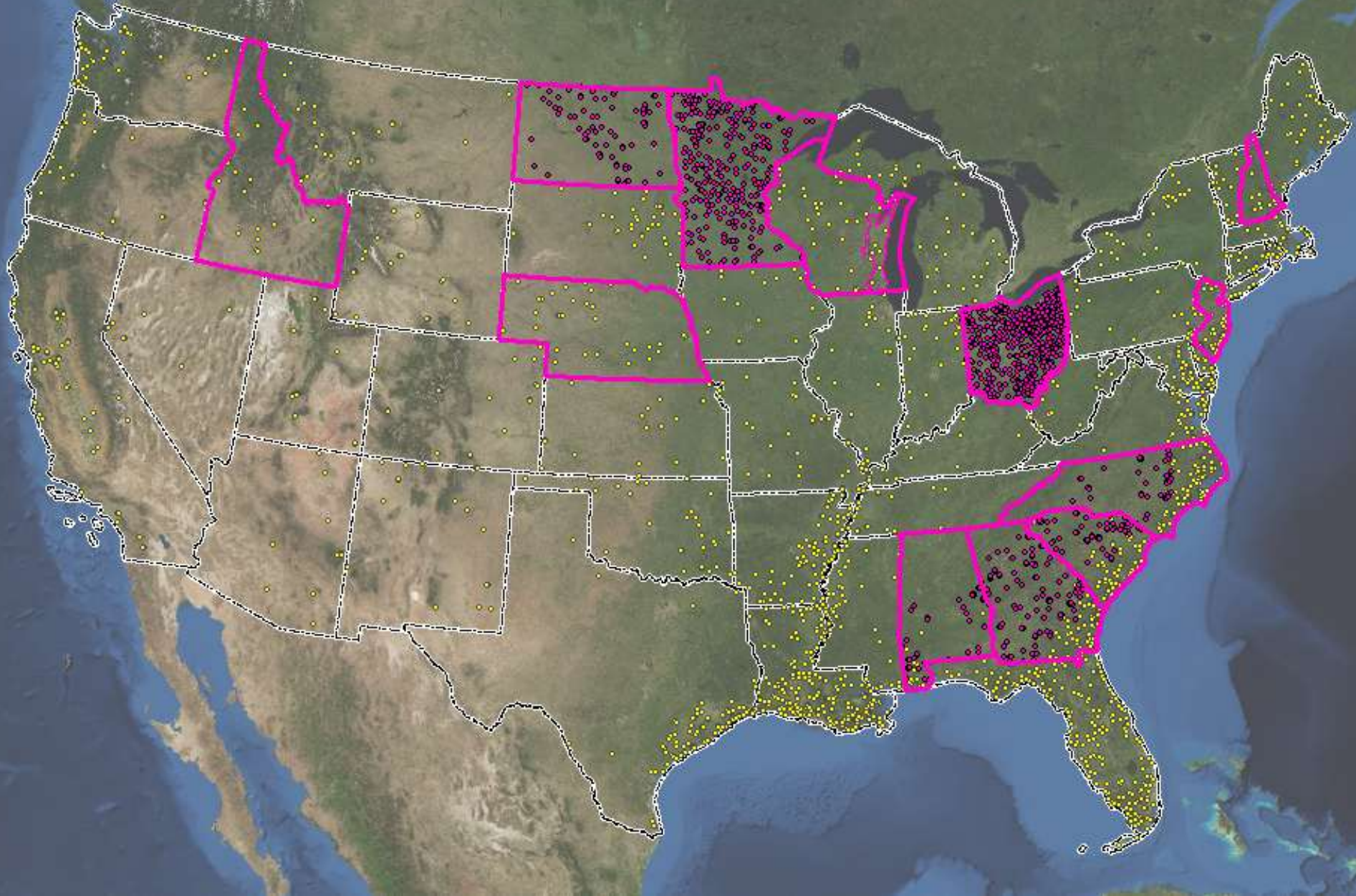


NWCA State and Regional Intensification Studies - Minnesota

NWMAWG Meeting
Dec 7, 2010

NWCA and Intensification Sites





STATE PANELISTS

- Tom Bernthal, WI DNR
- Mike Bourdaghs, MN Pollution Control Agency
- Brian Gara, Ohio EPA
- Ted LaGrange, NE Game & Parks Commission
- Rick Savage, NC DENR
- Kathleen Strakosch Walz, NJ DEP



PANEL TOPICS

- OBJECTIVES, DESIGN & INDICATORS
- SURVEY LOGISTICS
- USE OF DATA & REPORTING
- STUDY CHALLENGES



OBJECTIVES, DESIGN & INDICATORS

- GOALS & OBJECTIVES OF STUDY
- DESIGN
 - Target Population
 - Geographic Scope
 - Sample Frame
 - Number of Sites
- INDICATORS



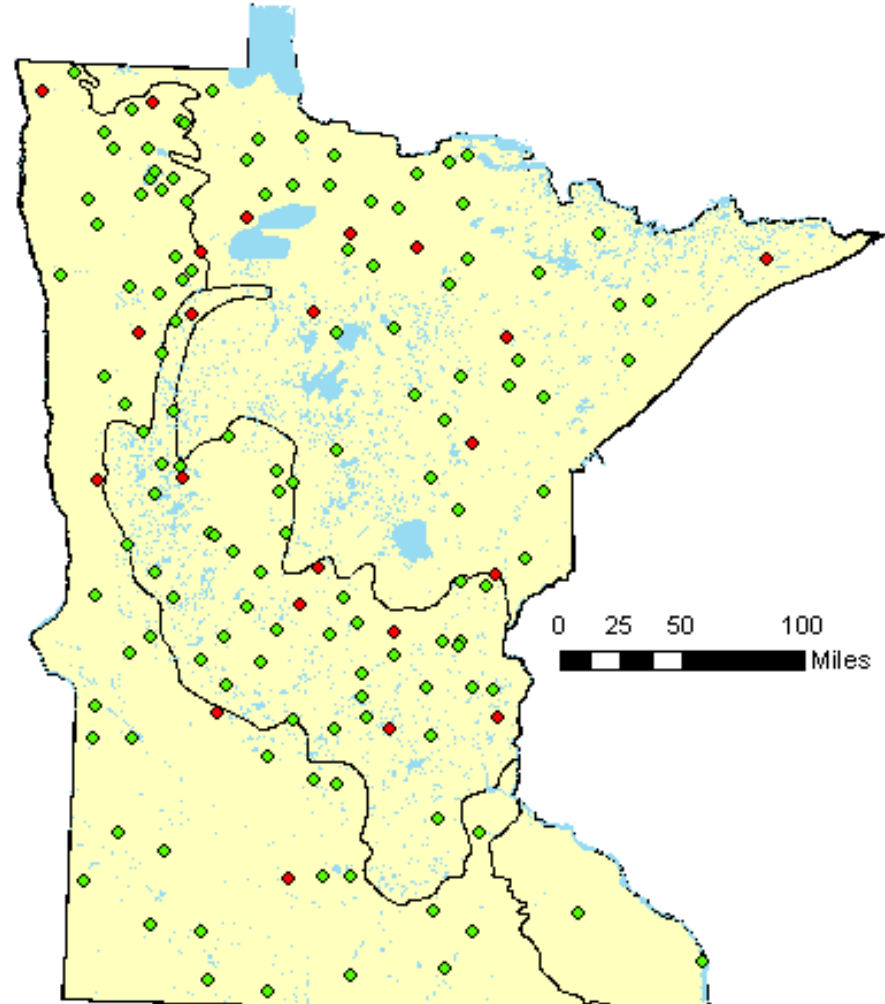
MINNESOTA

- **Goals and Objectives**
 - Status & Trends of wetland condition statewide & by major ecoregion



MINNESOTA

- Target population = NWCA
- Statewide in scope
- Sample frame: MN Status & Trends
 - Similar design to USFWS Status & Trends
 - 1 mi² plots
 - 3 year rotation (started 2006)
 - Wetland types (+/-) equivalent to Cowardin classes
- 150 Points Statewide
 - 50 points/major ecoregion
 - First 22 = National Points (red)
 - Next 128 = State Points (green)



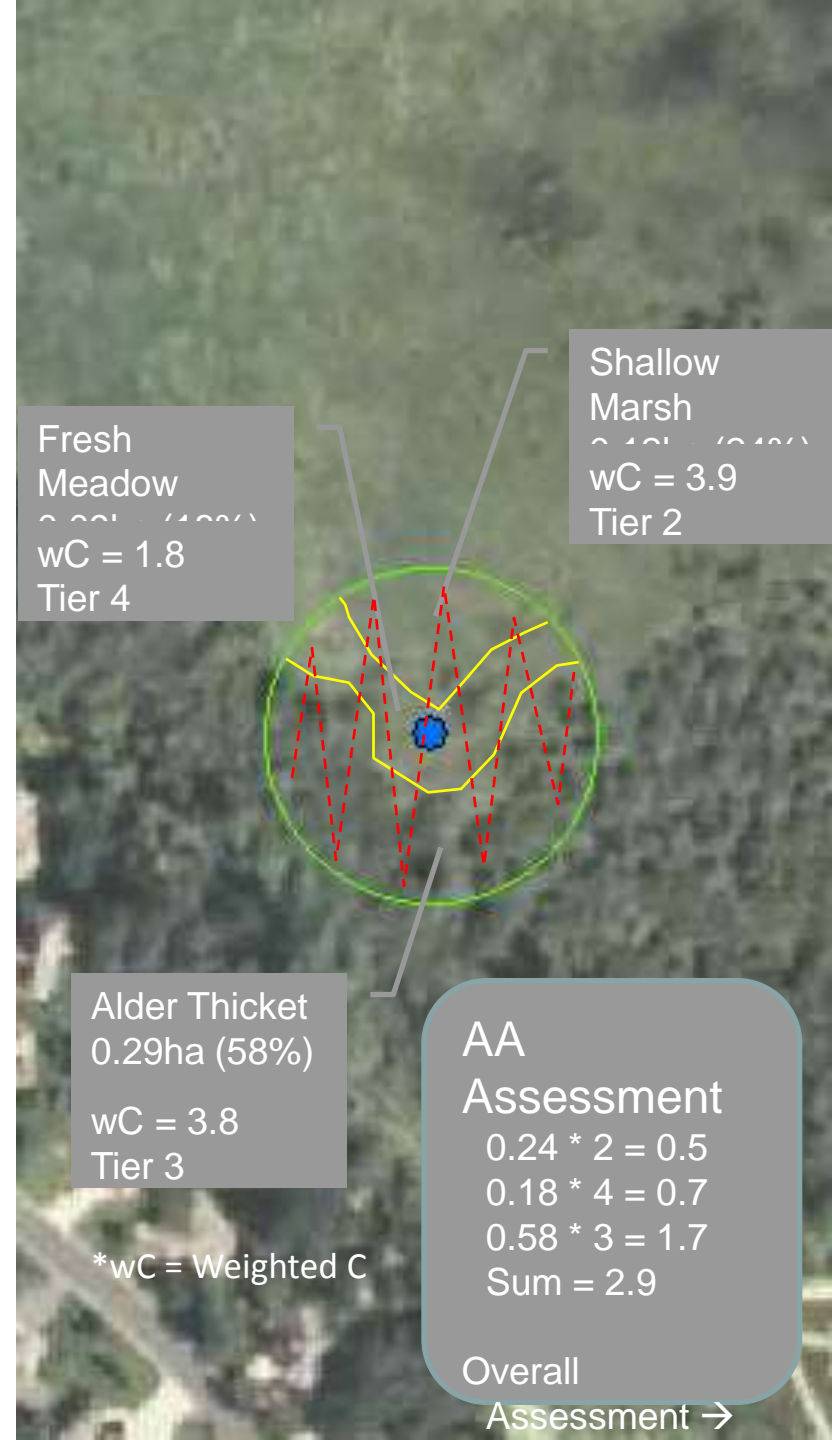
MN Wetland Condition Assessment Sampling

Floristic Quality Assessment (FQA)

- Plant communities are basic assessment unit (Eggers & Reed)
- 4 tier calibrated assessment categories/community
- Anticipated completion: spring 2011

Basic Steps...

- Map Communities in AA
- Perform Composite Meander
 - Meander covers all communities in AA but data is recorded separately for each community
 - Record species
 - Estimate cover for each sp./community
- Compute Metrics & Make Community Assessments
- We can then make...
 - Composite AA Assessment
 - Aggregate/Extrapolate Class/Community Extent





SURVEY LOGISTICS

- **FUNDING**
- **PERSONNEL**
- **PARTNERS**
- **TIME-FRAME**



MN LOGISTICS

Funding

- Primary staff = In kind (MN Clean Water Legacy)
- Temporary staff/supplies/travel = 106 Grant

Field Crews

- 3 crews
 - o NWCA & 2 state crews
 - o 2 permanent & 6 temp staff

Rough 2011 Timeline

- Desktop recon : January-May
- NWCA training : Mid May
- NWCA recon : Late May – Early June
- MNWCA training : Early June
- Sampling : Mid June - August

	NWC A	MN #1	MN #2
RS II	X		
RS II		X	
PCS Temp			X
PC Tech	X		
SW #1	X		
SW #2	X		
SW #3		X	
SW #4			X



USE OF DATA & REPORTING

- **HOW WILL YOU USE DATA?**
 - Assess status and trends (quality, quantity)
 - Integrate into other watershed assessments
 - Inform program management
- **HOW WILL YOU REPORT DATA?**
 - Scientific / public reports
 - Online



CHALLENGES

- **STUDY CHALLENGES**
- **UNRESOLVED ISSUES**
- **HELP!**



MN CHALLENGES

Size

- MN: ~84,000 sq mi / 400 mi N:S / 350 mi E:W
- Water Resource
 - 10.6 million wetland acres
 - 92,000 stream miles
 - 12,000 lakes (> 10 ac/6' deep)
- Remote areas

Red Lake Peatland

